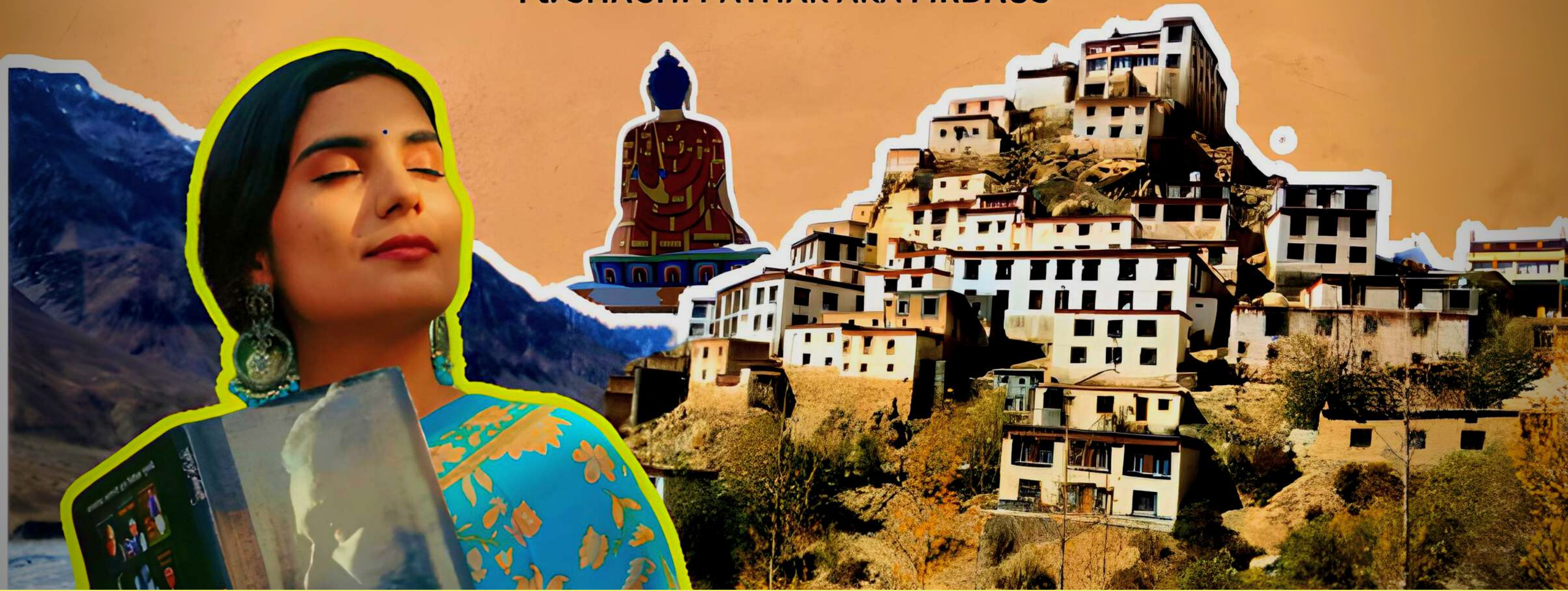


SPITI SUMMMER SUV EXPEDITION

Ft. SHACHI PATHAK AKA FIRDAUS



THE BEST ROAD TRIP OUT THERE



BECAUSE MONEY RETURNS, TIME DOESN'T.

BRIEF ITINERARY

Day 1 : Delhi - Shimla

**Day 2 : Shimla - Narkanda -
Rampur/Sangla**

Day 3 : Rampur - Sangla - Chitkul - Kalpa

Day 4 : Kalpa - Tabo/Nako

**Day 5 : Nako - Kaza - via Dhankar and
Pin Valley**

Day 6 : Hikkim - Komic - Langza

Day 7 : Key - Chicham - Chandratal

Day 8 : Chandratal - Manali - Delhi

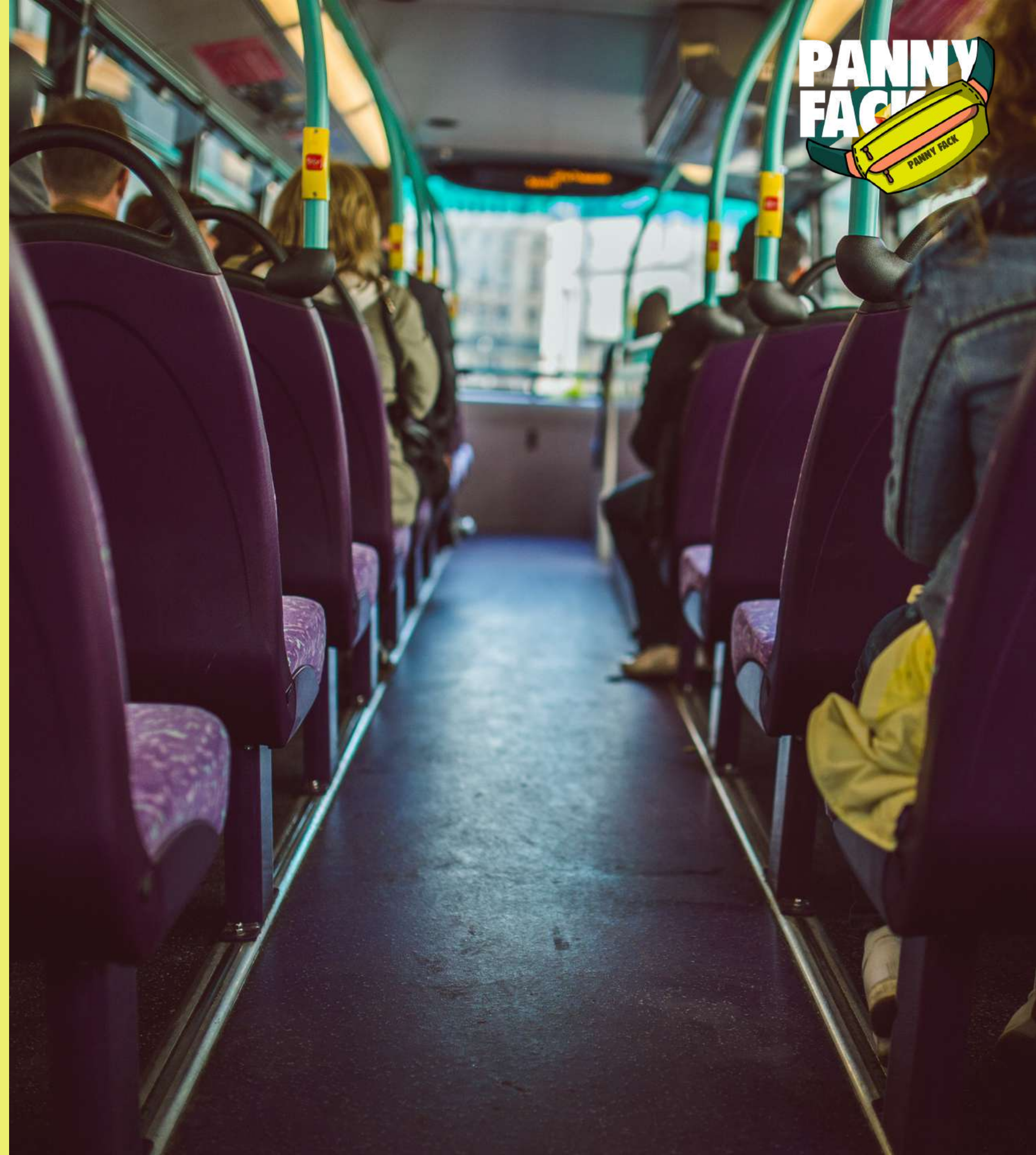
Day 9 : Reach Delhi



DAY - 1

DELHI - SHIMLA

You will meet our Trip Lead at ISBT Kashmere Gate by 9:00 PM. After the initial Introduction to the group, we start our 8-day journey by Volvo from Delhi to Shimla. We are taking overnight Volvo from Delhi to Shimla.



DAY - 2

SHIMLA - SANGLA

- We will reach Shimla in morning around 8:30 AM.
- The Spiti Expedition journey starts from here.
- Long drive through the scenic beauty of Kinnaur via Narkanda and Rampur.
- Travel along the Sutlej river till Karcham.
- Arrive at Rampur/Sangla and you'll be given a quick briefing followed up by ice breaking session and a rest day.



DAY - 3

SANGLA - KALPA

- After Breakfast, depart from Rampur towards Sangla.
- Weather on this trip is unpredictable, We'll proceed towards Chitkul if roads are open else we'll directly proceed to Kalpa. - Chitkul is the last Indian village towards China border. Explore the best of it.



DAY - 4

KALPA - TABO

- Wake up to the kinner kailash view.**
- Visit the popular suicide point and continue your excursion towards Tabo.
 - We will have lunch stop in Nako and overnight stay in Tabo



DAY - 5

TABO - KAZA

Wake up in the morning and absorb the Spitian vibes. We will visit the Pin valley and Dhankar Monastery on our way to Kaza today, Dinner and overnight stay in Kaza.



DAY - 6

KAZA LOCAL

- Get your breakfast & Let's head to explore Spiti valley.
- At 4,400m above the sea level awaits the Hikkim post office which is the highest post office in the world and it's time to send postcards to your loved ones.
- Visit Komic Gompa at the World's Highest motor-able village and have a delicious lunch.
- We then head towards Langza which is a high- altitude village that is known for it's ancient marine fossils. You can also collect them as souvenirs to cherish later.
- Now, we head to see the spectacular tibetan Buddhist Key Monastery located at an altitude of 4166m above sea level.
- Next, we go to kibber which perhaps is the hotspot of snow leopards.
- We'll end our day by visiting the Chicham Bridge which is the highest bridge in aisa. You'll be mesmerised with the views it offers and how.



DAY - 7

TOWARDS CHANDRATAL

Wake up and have breakfast at the hotel and then check out. Later depart for Chandrataal Lake. On the way we will visit the highest bridge in Asia at Chicham village and a pit stop for Lunch at Losar, the last village of Spiti Valley. Reach Chandra Taal by evening and check in camps. Have dinner. Overnight stay under the gaze of Billion stars and the Milky way Galaxy.



DAY - 8

FINAL DAY

Wake up early morning and after having breakfast check out the hotel. Later depart for Manali. Reach Manali by afternoon and later depart to Delhi. Overnight Journey to Delhi

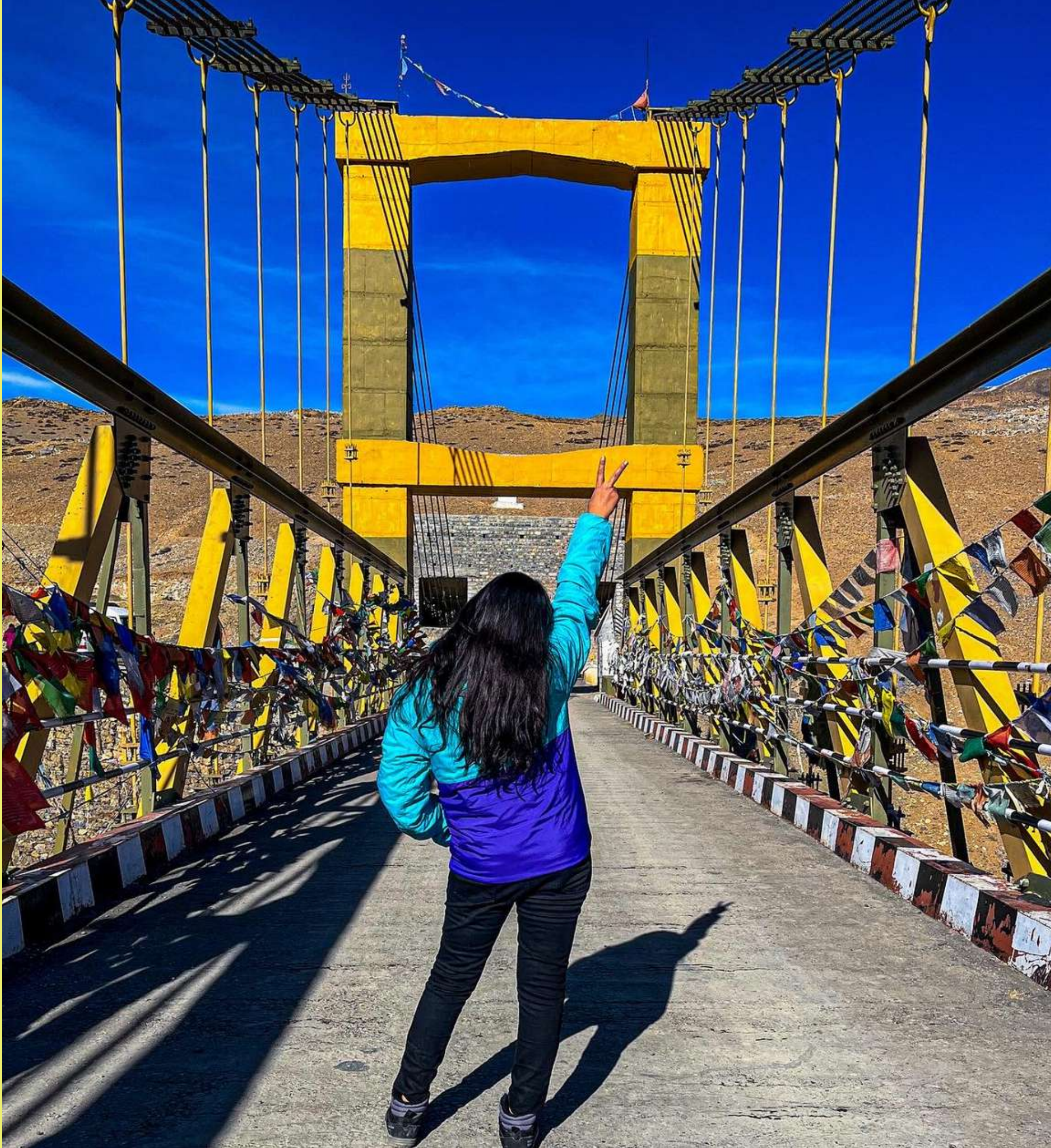


DAY - 9

REACH DELHI

Reach Delhi tentatively by 10am in the morning. Your trip ends here with a suitcase full of memories and friendships of a lifetime.





INCLUSIONS



- Accommodation at all hotels and camps as per the itinerary on triple sharing basis. Additional charges for double / single sharing.
- Volvo Bus Tickets Ex. Delhi.
- 6 Breakfast and 6 dinner.
- Comfortable SUV for all days as per the itinerary (Day 2 - Day 8) (only 4-5 people per car)
- Reliable, experienced and adept English-speaking local driver cum guide with great knowledge of the area and the terrain.
- Trip Manager
- Driver charges, driver accommodation, fuel and inter-state toll.
- Camping fees, comfortable tents and sleeping bags / blankets at Chandratul Lake.
- All Applicable Monastery / Museum Fees



EXCLUSIONS



- **Any Personal Expenses / Tips / Permits.**
- **5% GST (Tax). Guide / Porters.**
- **Meals in Transit / Lunch in Kalpa or Rampur / Any Beverages / Any meals that are not mentioned in the itinerary.**
- **Sightseeing in Shimla / Any accommodation, activities or transfers other than what is mentioned in the itinerary.**
- **Any cost arising out of unforeseen circumstances including medical emergencies and acts of God.**
- **Anything that is not mentioned in the above list of inclusions.**

PRICING



SPITI EXPEDITION X FIRDAUS

TEMPO TRAVELLER : Rs 19000/- Per Person

SUV VARIANT : Rs 25000/- Per Person

NOTE : ALL THE ACCOMMODATION WILL BE ON TRIPLE SHARING BASIS AND DOUBLE SHARING WILL ONLY BE AVAILABLE ON FIRST COME, FIRST SERVE BASIS.

TRIP HIGHLIGHTS



**SANGLA
CHITKUL
KALPA SUICIDE POINT
KINNER KAILASH VIEW
KHAB SANGAM
SUMDO BORDER
GUE MONASTERY (SUBJECTED TO PERMISSIONS)
DHANKAR MONASTERY
PIN VALLEY VISIT
KAZA MARKET
KEY MONASTERY
CHICHAM BRIDGE
KIBBER
LANGZA
HIKKIM
KOMIC
CHANDRATAL
LOSAR
KUNZUM PASS
ATAL TUNNEL**

TERMS & CONDITIONS



- The photos/videos content created on this trip is the property of us and can only be used by us for advertising across media platforms. None of the digital content can be used by any one without obtaining the rightful permissions by us.
- Full Payment of the trip cost must be made before the trip begins. Pending Payments may eventually lead to the Cancellation of the trip.
- The IDs shall all be verified before boarding. No boarding shall be entertained without a valid Govt. ID.
- The Transfer of the bookings is not permitted. Only the names mentioned at the time of confirmation shall be allowed to travel.
- No refunds shall be made towards any inclusion(s) not availed by the Client.
- Travelers must take care of their luggage & belongings. The management shall not be responsible for any damage or any missing items along the tour.
- The time of Departure is stated & fixed. All travelers must update their status with the Trip coordinator(s), & report at the pickup point 30 mins prior to the scheduled departure.
- The Air Conditioning will be switched off in the hills. Also, during the trip, it shall be the Driver's discretion to put off the AC as & when required, considering the travelers' safety & ease of travel along uneven & dangerous routes.
- Our time of departure is fixed must depart by the stated time & keep their status updated with the trip coordinator(s). Anyone missing the bus shall not be eligible for any refunds. We shall call you twice before the schedule departure.
- No act of misconduct or indiscipline shall be tolerated on the tours. We are a cordial travel community and we aspire to bring to you a hassle free and memorable experience.
- We shall not be responsible for any delays or alterations in the program or indirectly incurred expenses in cases such as Natural Hazards, accident, breakdown of machinery, weather conditions, landslides, political closure or any untoward incidents.
- We do not provide any insurance policy to cover for the expenditure on sickness or accidents or losses incurred due to theft or other reasons.
- Numerous factors such as weather and road conditions the physical ability of participants etc. may bring alteration in the itinerary. We reserve the right to make necessary changes in the schedule in the interest of safety, comfort and general well-being!

PANNY FACK



A COMMUNITY FOR TRAVELERS